

CABINET INSTALLATION GUIDE



Scan the QR code for complete installation guide.
Having question? Call us at: **516 642 8031!**



Model: B24 – B42

Specifications: One Drawer | Two Doors | One Shelf

Width: 24 – 42 inches

Depth: 24 inches

Height: 34.5 inches

Important: This brochure provides step-by-step instructions for the installation of your Base cabinet model. Please follow the instructions carefully to ensure a proper and secure installation.

Need Help?

If you encounter any problems during installation or need **one-to-one video phone call support**, our team is always here to assist. Call us first at: **516 642 8031.**

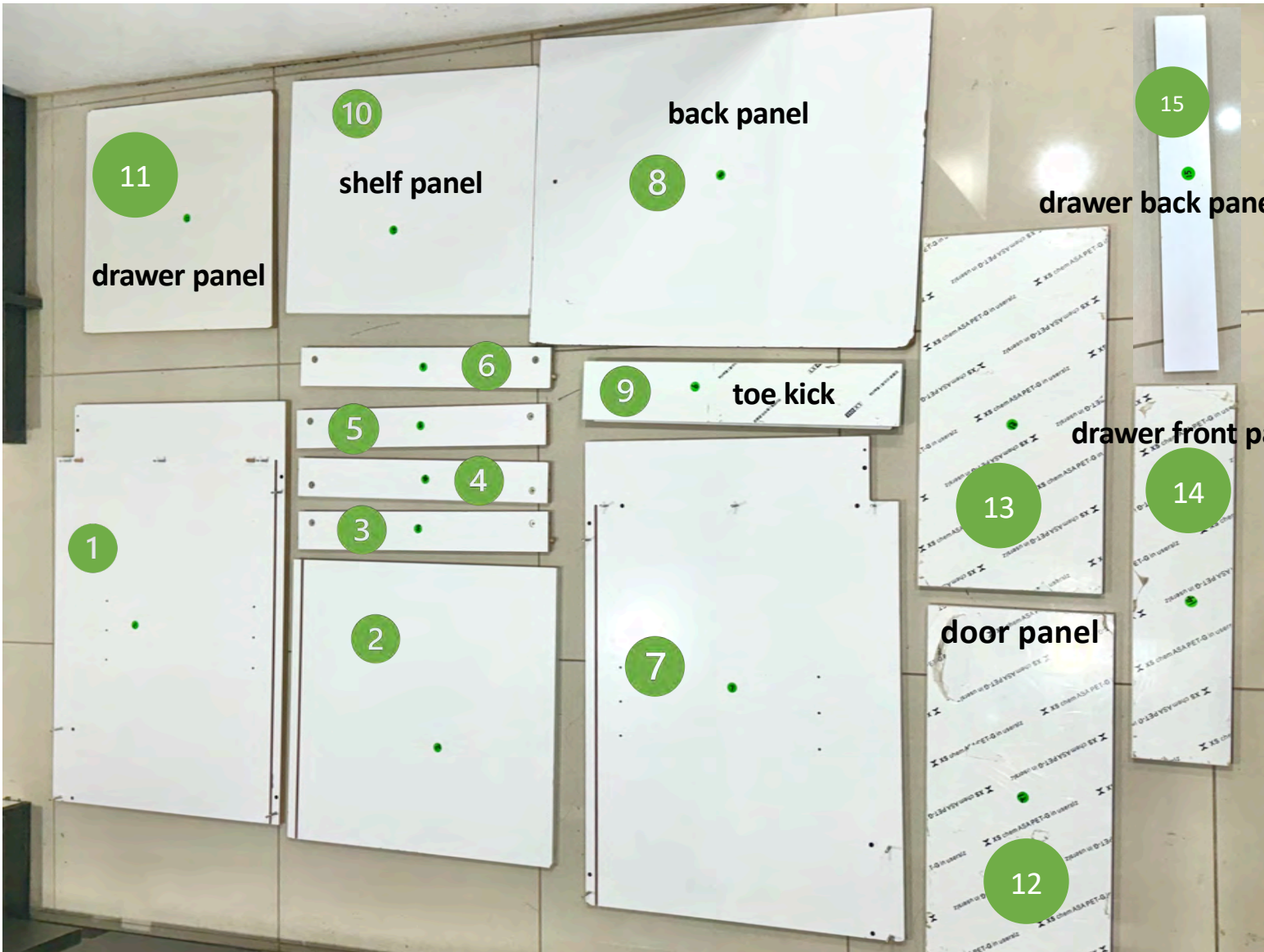




Assembly Preparation

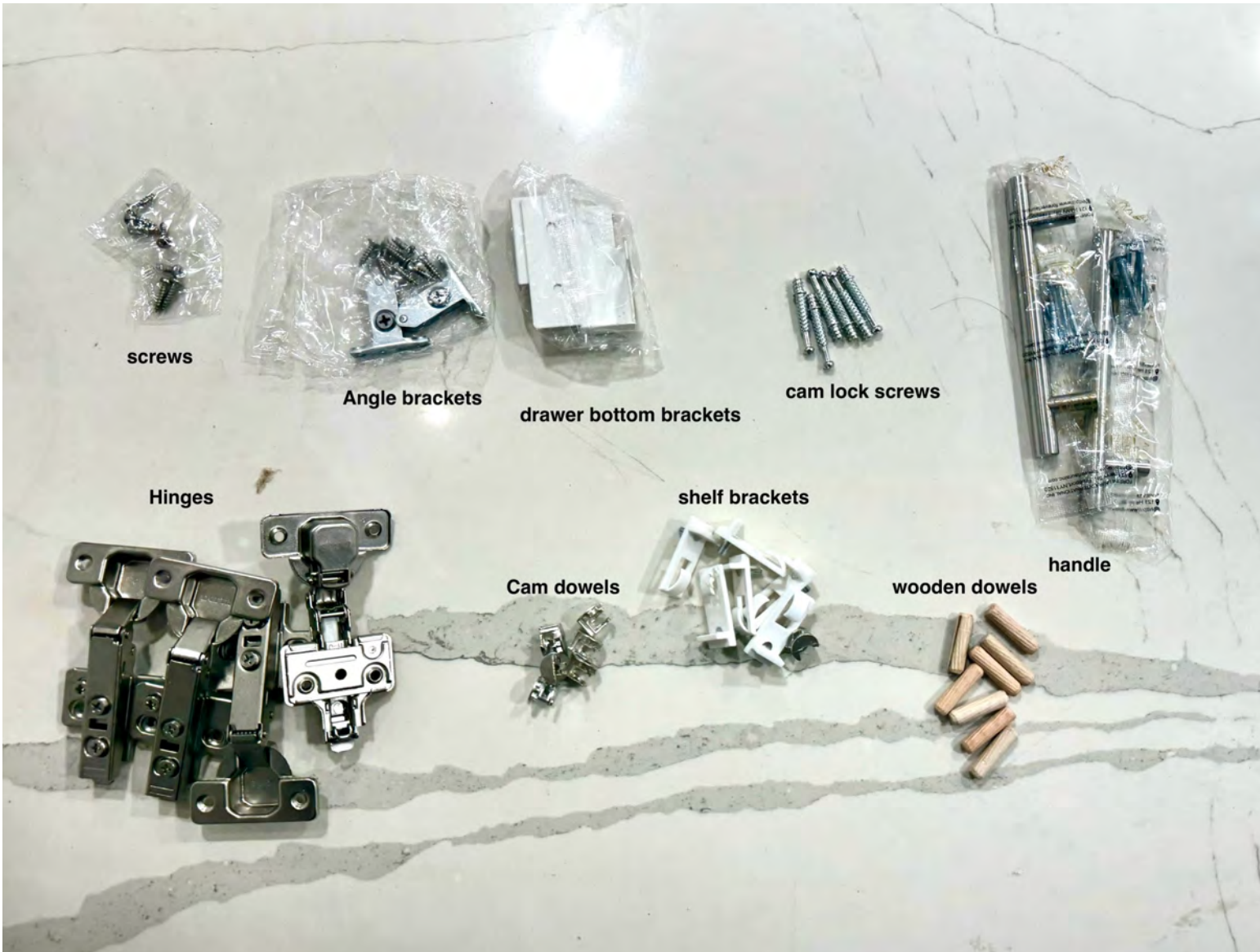
Before starting the assembly of your Base cabinet, please take a moment to review all the items included in the package.

Important Note: Each item has been marked with a green dot sticker that includes a number. In the following assembly steps, we will refer to each component by these numbers rather than by name. **Please ensure that you match each number with the corresponding item** as shown in the picture.





Our kit includes screws, and cam locks with matching dowels, angle brackets, drawer bottom brackets, shelf brackets, cabinet handles, and wooden dowels.



screws

Angle brackets

drawer bottom brackets

cam lock screws

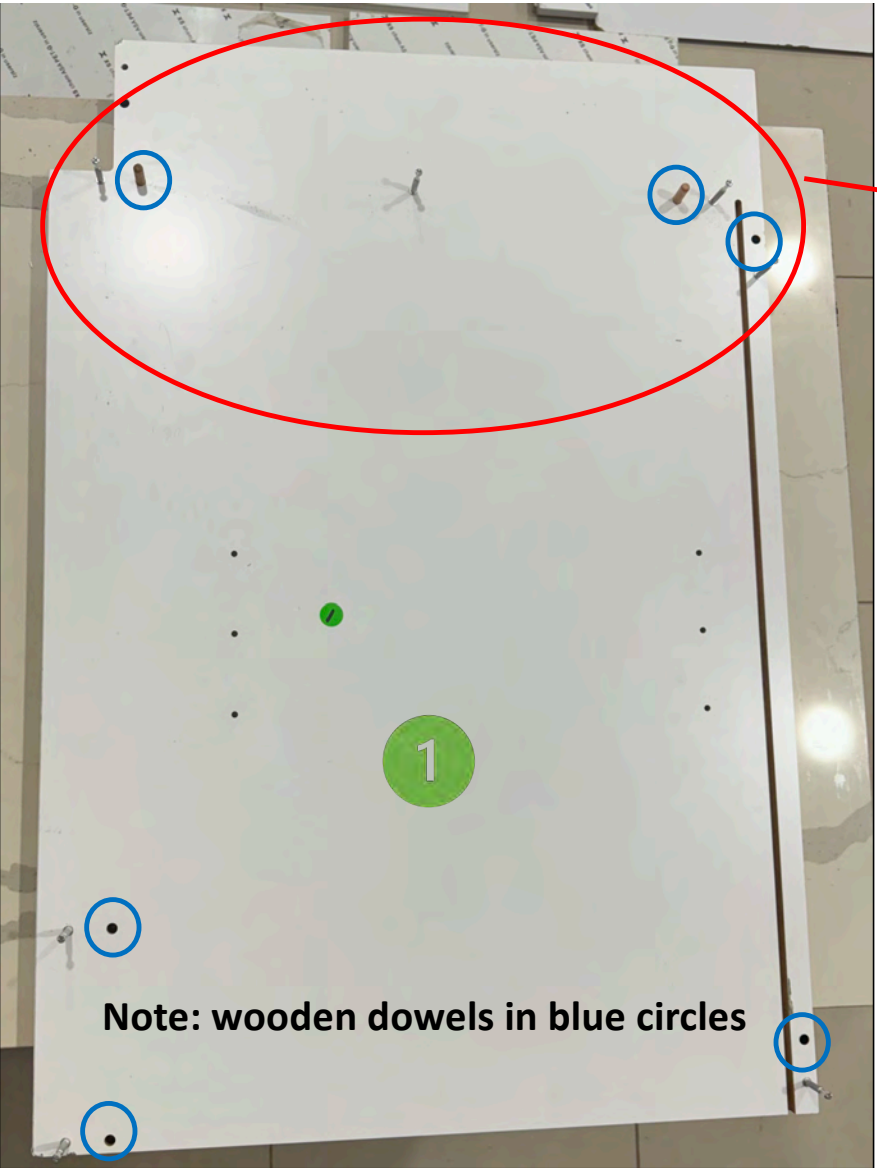
Hinges

shelf brackets

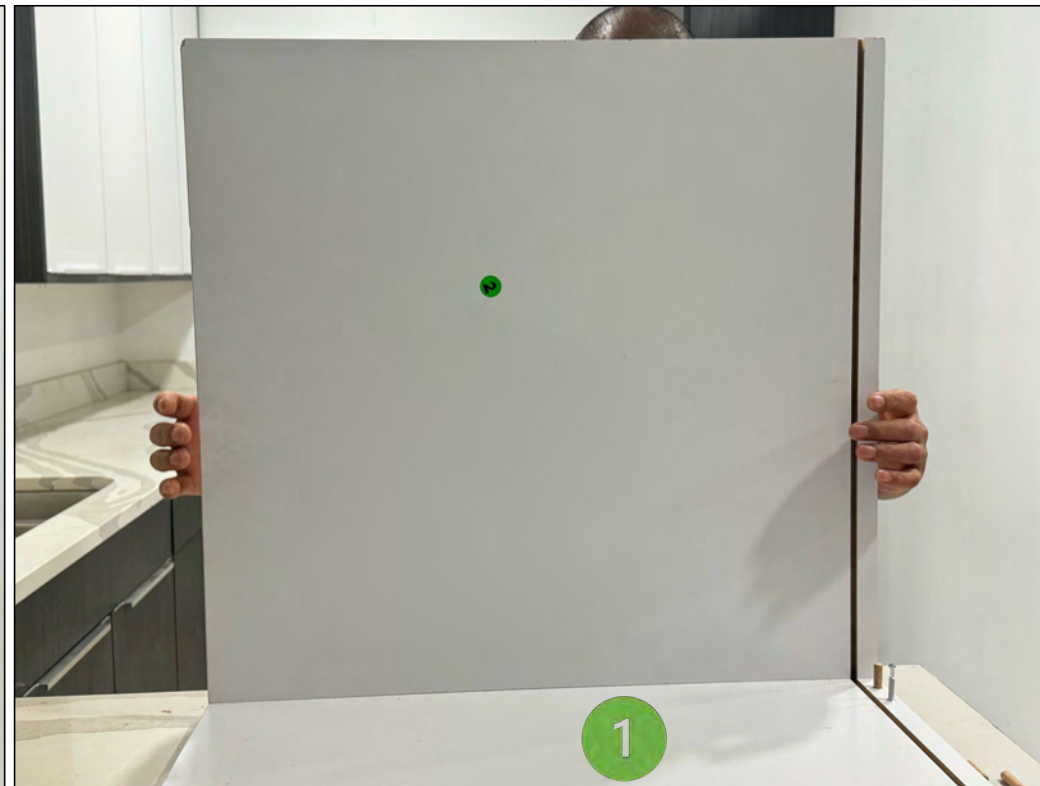
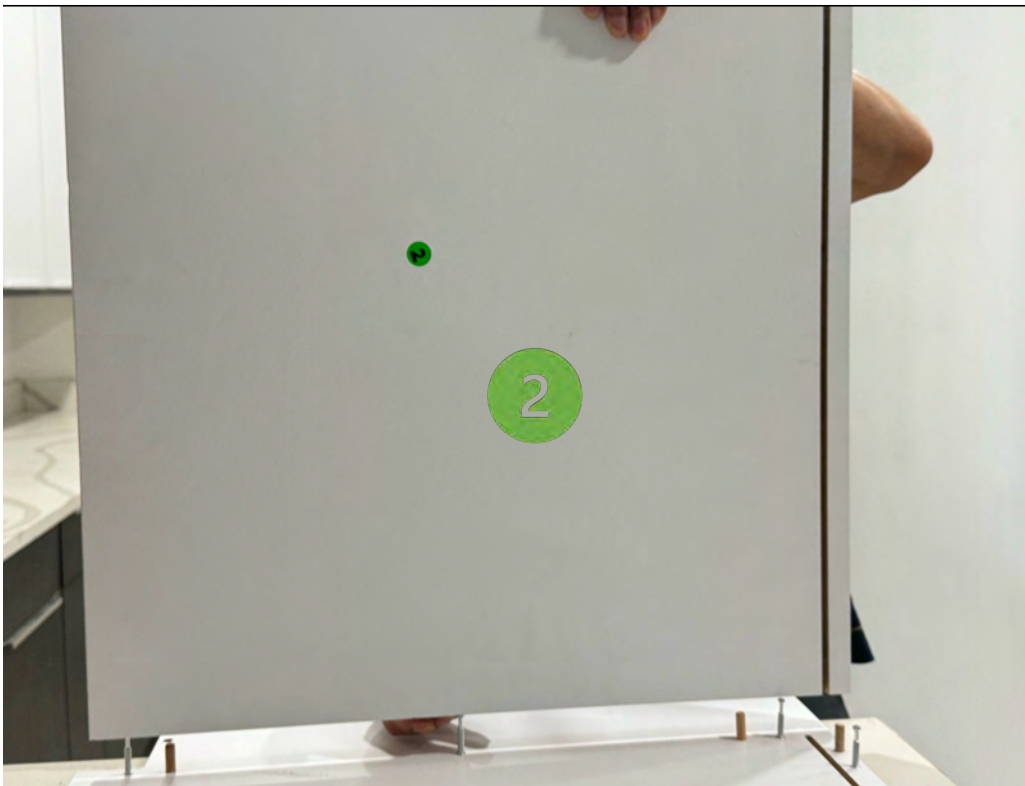
Cam dowels

wooden dowels

handle



Step 1: Take out Board 1 and insert the screws and wooden dowels into the corresponding holes as shown in the picture. Refer to the image for detailed placement.



Step 2: Take out Board 2 and insert it into Board 1 as shown in the picture. Make sure the screws and dowels align correctly for a secure fit.

Screws facing outward

Board 4 screws
Facing inward



Step 3: Insert Boards 3, 4, 5, and 6 into the positions shown in the picture. Be sure to distinguish between the front and back—make sure all sides with the **screws are facing outward (except for Board 4)**. Note that the screws on **Board 4 should face inward**, towards Board 2, meaning Board 4 and the adjacent Board 3 will be back-to-back. Note: Go to Step 6 for final look.

Step 4: Take out Board 7 and insert the screws and wooden dowels into the corresponding holes as shown in the picture. **Same as Step 1.**





Step 5: Insert Board 7 into the top of Boards 3, 4, 5, and 6 as shown in the picture. Once inserted, you can **gently** tap the connection points with a small mallet to ensure the boards align properly and are tightly secured.

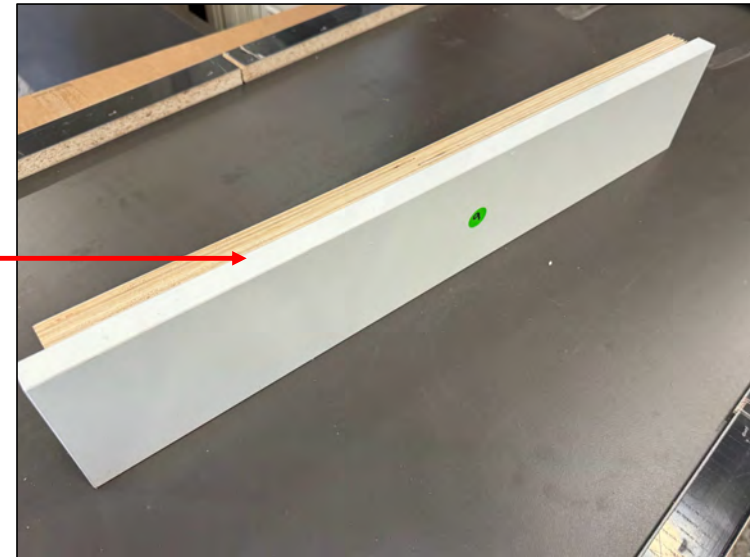
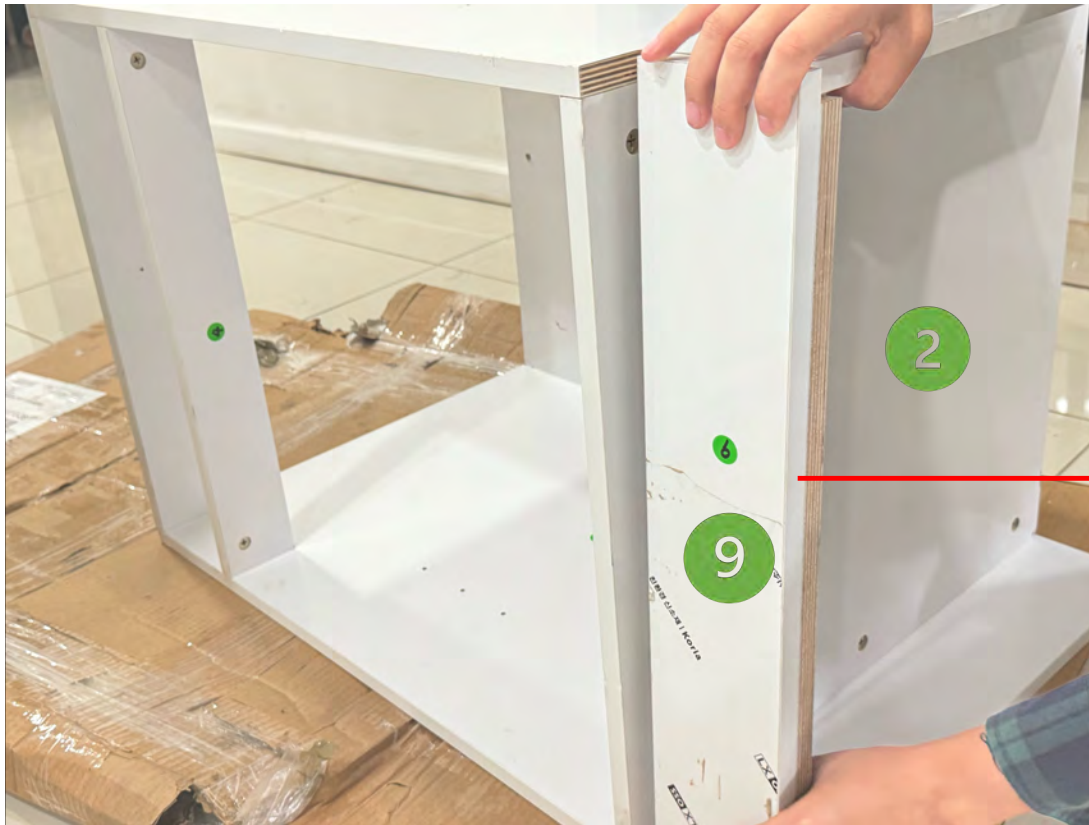


Step 6: After assembling the structure as shown in the picture, tighten **all** the screws, including those on the **inside and outside** of Boards 2, 3, 4, 5, and 6.

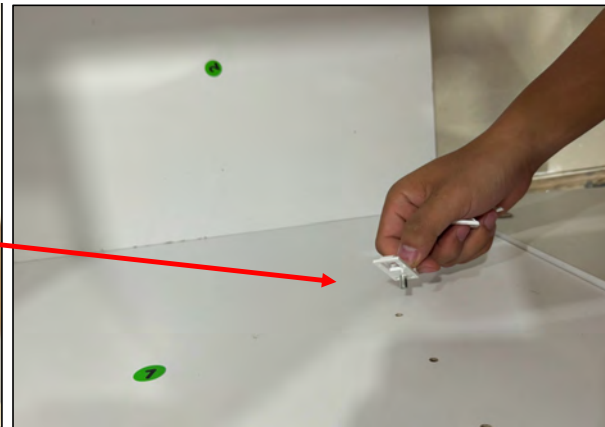
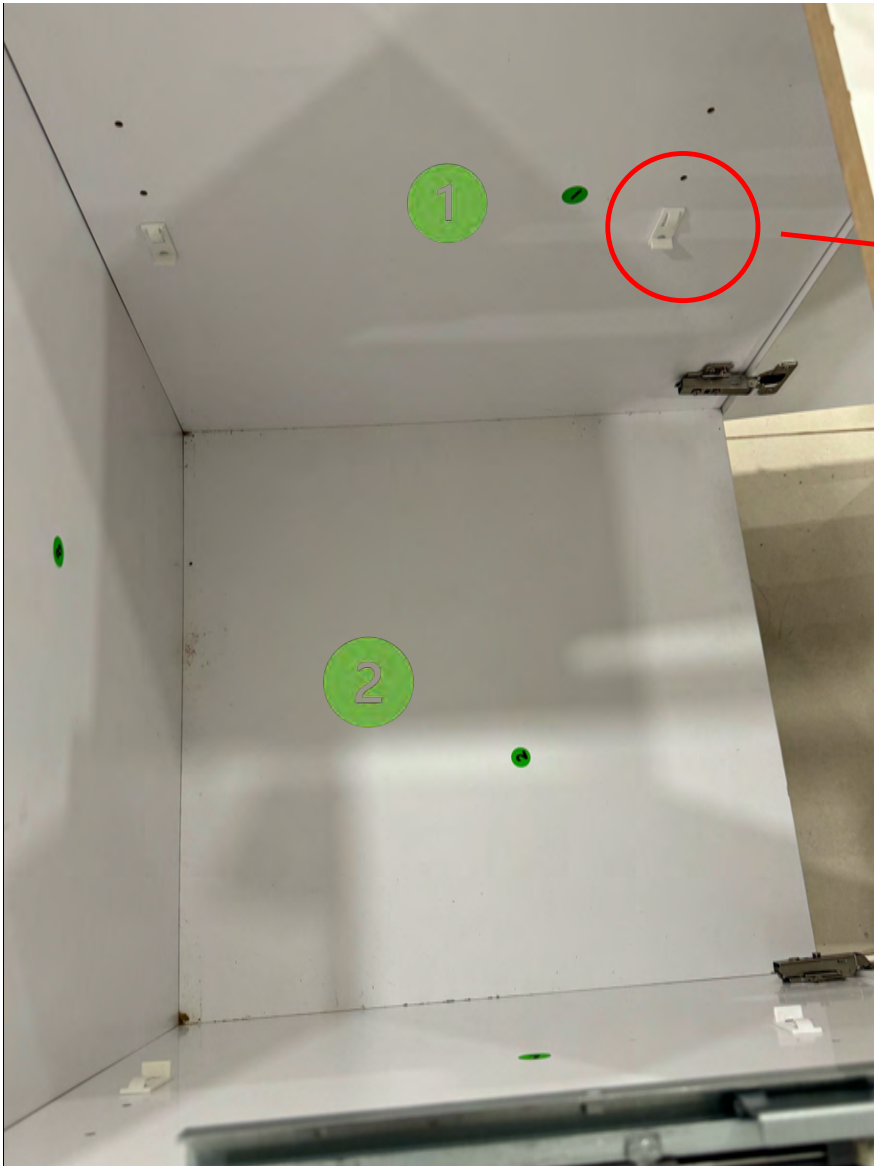


Step 7: Insert Board 8 (the back panel) into the grooves along Boards 1 and 7, ensuring that it is positioned **inside** Board 6, tightly against it. Then, screw into the holes on Board 8 to secure Boards 6 and 8 together.

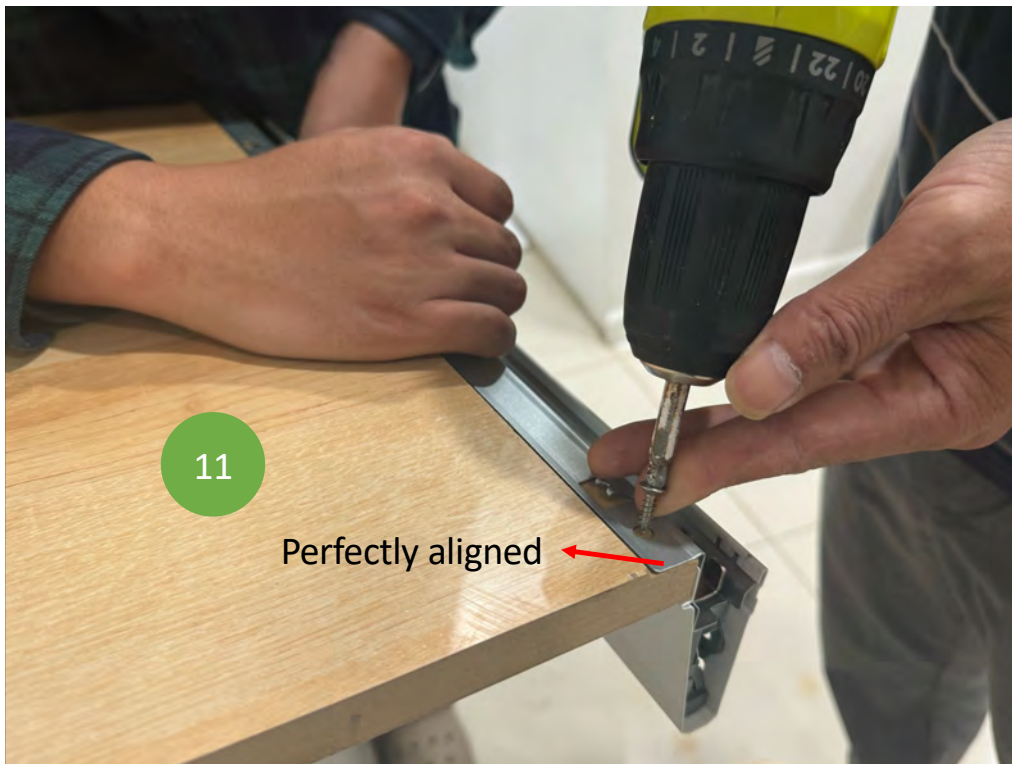




Step 8: Before inserting the toe kick board (Board 9), locate the backing for the toe kick. Attach the toe kick board to its backing using screws, ensuring that the position aligns perfectly with the cabinet's toe kick area to avoid any misalignment. Then insert Board 9, also known as the **toe kick**, into the bottom, ensuring it is tightly against Board 2. Snap it into place. For added stability, you may also choose to screw it in.



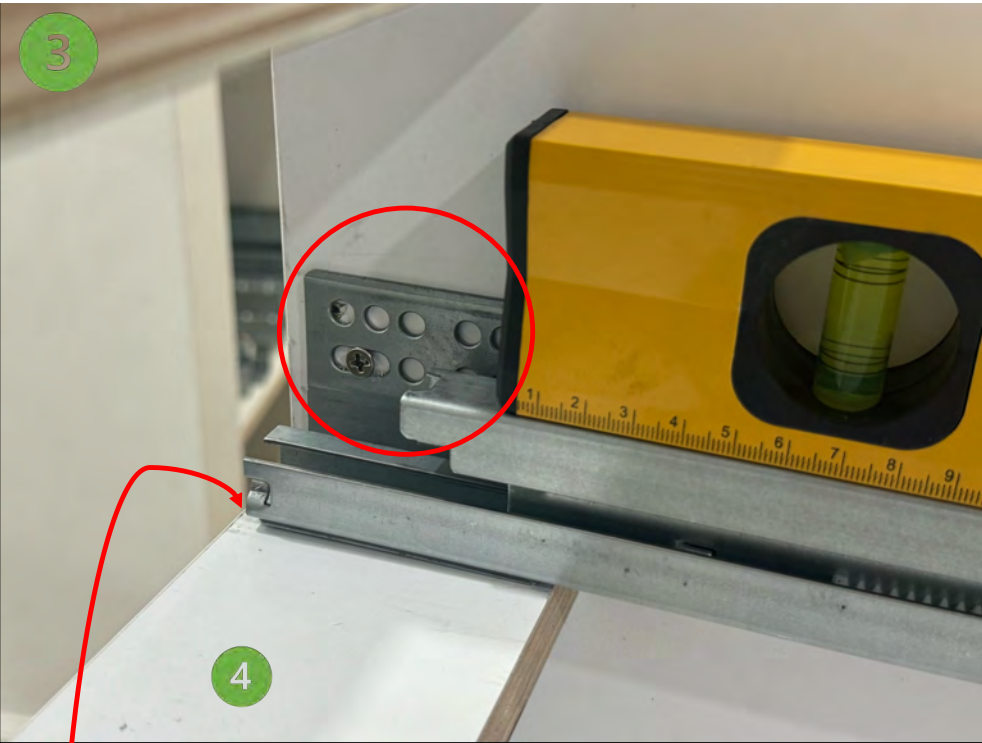
Step 9: Attach the four shelf brackets inside the cabinet at your desired height. Then, slide Board 10, **the shelf panel**, into place, securing it between the brackets as shown in the picture.



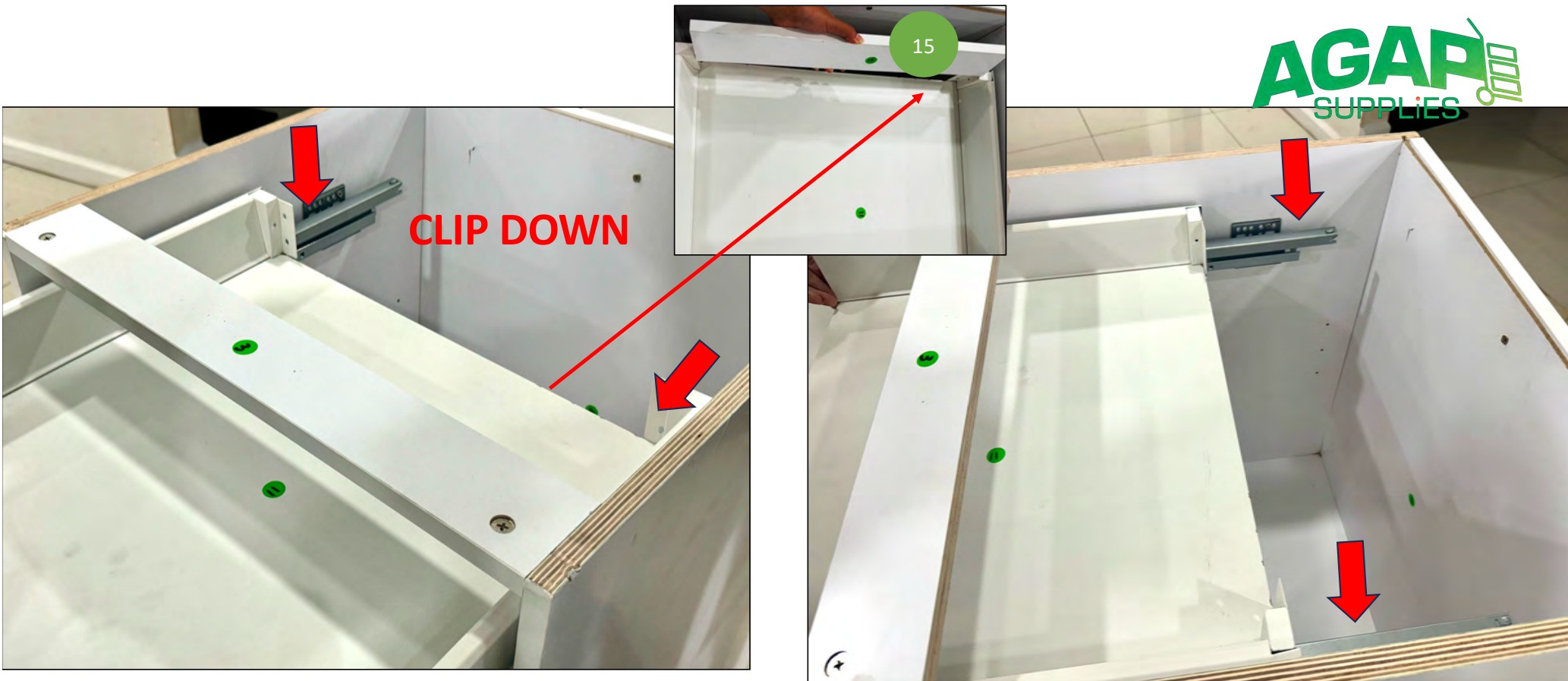
Step 10: Take out Board 11, **the drawer panel**, and attach the drawer slides (rollers) to both sides of its back. Then, install the corresponding **drawer bottom brackets** on the drawer as shown. **Ensure everything is aligned and securely fixed** before proceeding to the next step.



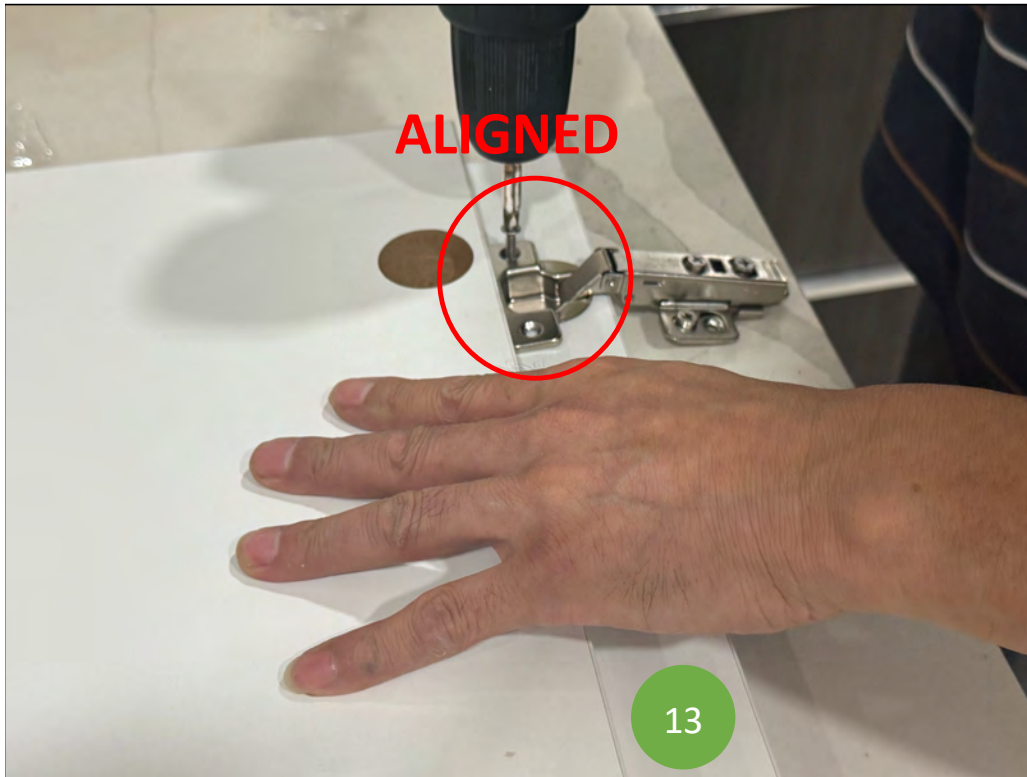
Step 11: Attach the **two angle brackets** to the left and right sides of the **drawer front panel, board 14**. Once the brackets are securely in place, fix the drawer front panel onto the drawer, ensuring it is properly aligned and securely attached.



Step 12: Attach the drawer slides (rollers) to the upper sides of Board 4. You may use a level to ensure the slides are **perfectly horizontal**. Begin by screwing in the outer screws through the adjustable elongated holes, which allow you to fine-tune the alignment on both sides. Ensure you **leave some space at the front of the slides**, considering the thickness of the drawer front panel. After securing the slides on both sides, test by inserting the drawer panel to ensure it fits perfectly without protruding. Once the alignment is confirmed, secure the back of the slides with screws.



Step 13: Now that you've assembled the entire drawer and attached the drawer slides, **simply clip the drawer onto the drawer slides**. Ensure it is properly aligned and moves smoothly without getting stuck, allowing for normal opening and closing. Insert the Board 15 (the drawer back panel).



Step 14: Install the hinges on the door panel (Board 12 & 13), ensuring they are perfectly aligned. Once the hinges are securely attached to the door, fix the hinges onto the cabinet body. Repeat this process for two door panels (Board 12 & 13).



Installation complete! Once finished, remove the protective film from the surfaces. Your cabinet is now ready to use.